

# TES

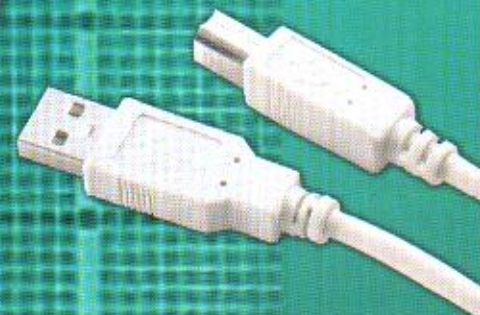
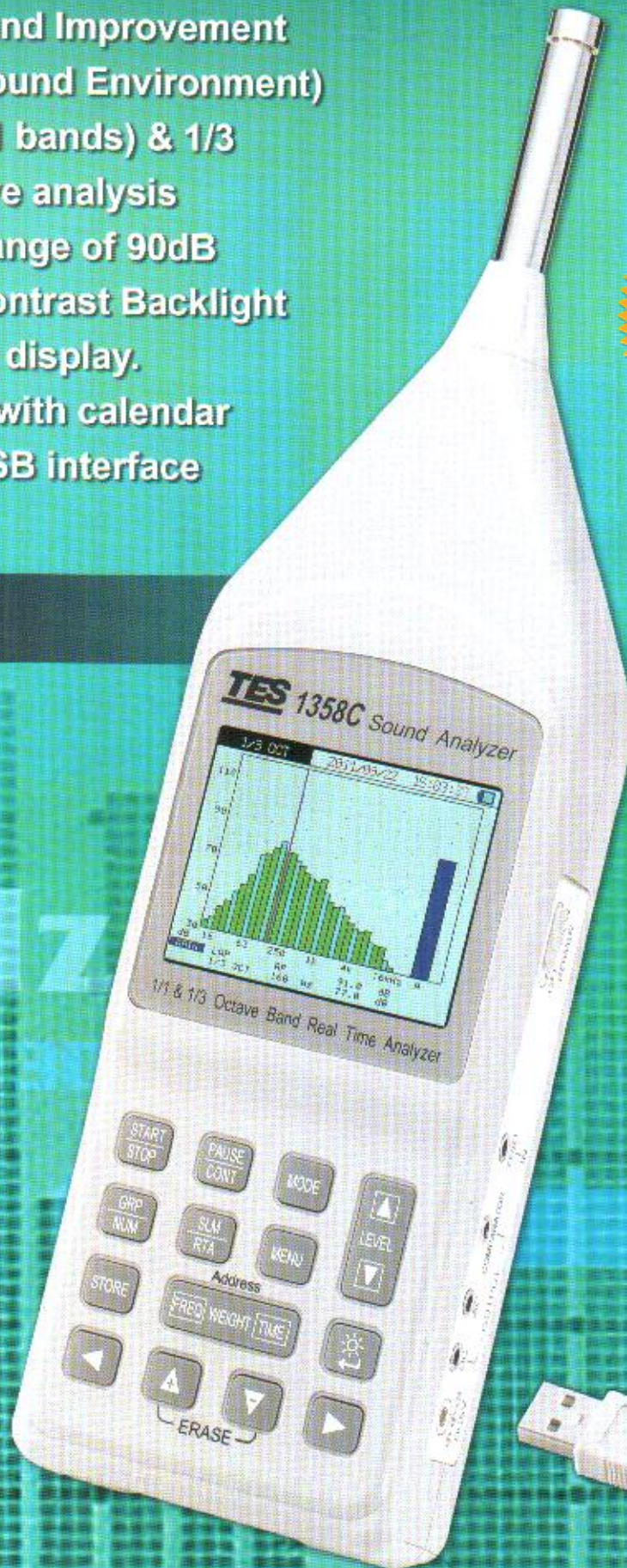
Reliable in Quality

## TES-1358C Sound Analyzer

- For Delicate Sound Improvement (Sound Effect/Sound Environment)
- Real Time 1/1 (11 bands) & 1/3 (33 bands) octave analysis
- Wide Linearity range of 90dB
- Superb high – contrast Backlight TFT – LCD color display.
- Real time Clock with calendar
- Software with USB interface



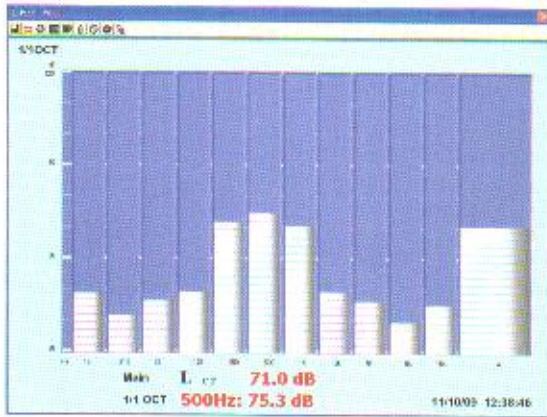
### USB



# 40 Hz

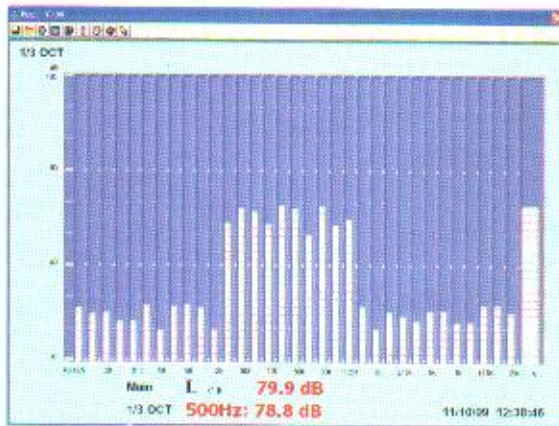
# 1358C Sound Analyzer

## Real Time 1/1 & 1/3 Octave band Analysis



### 1/1 Octave band center frequencies : (11 bands)

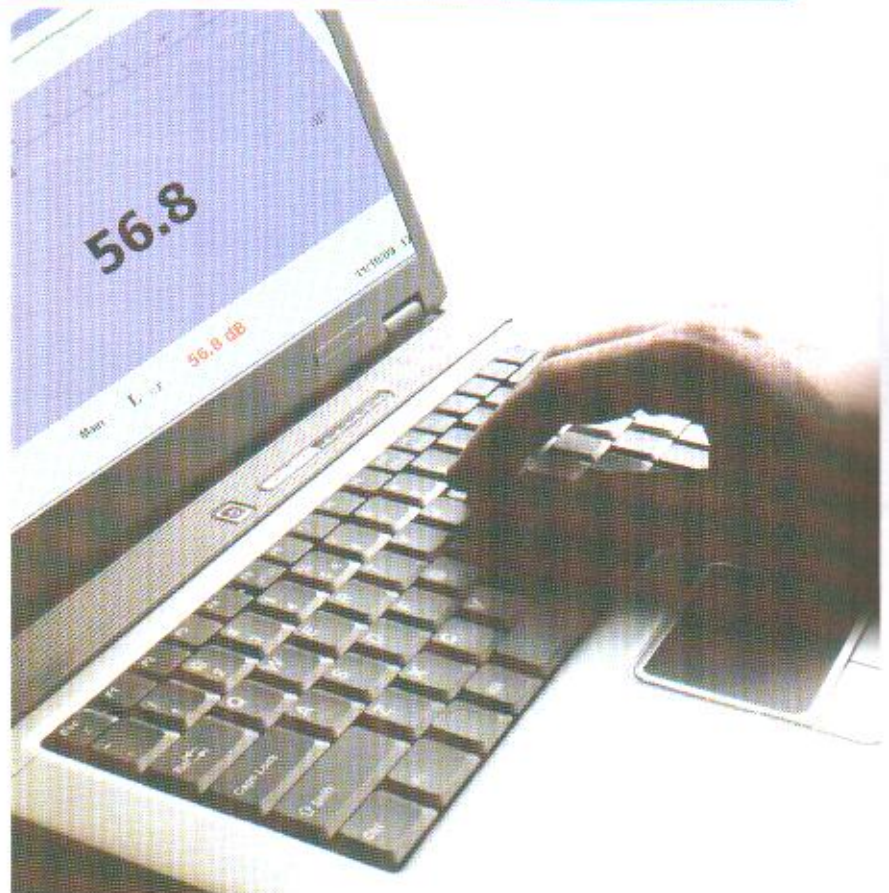
|       |         |       |        |        |        |
|-------|---------|-------|--------|--------|--------|
| 16Hz, | 31.5Hz, | 63Hz, | 125Hz, | 250Hz, | 500Hz, |
| 1KHz, | 2KHz,   | 4KHz, | 8KHz   | and    | 16KHz  |



### 1/3 Octave band center frequencies : (33 bands)

|         |        |          |          |         |        |         |
|---------|--------|----------|----------|---------|--------|---------|
| 12.5Hz, | 16Hz,  | 20Hz,    | 25Hz,    | 31.5Hz, | 40Hz,  | 50Hz,   |
| 63Hz,   | 80Hz,  | 100Hz,   | 125Hz,   | 160Hz,  | 200Hz, | 250Hz,  |
| 315Hz,  | 400Hz, | 500Hz,   | 630Hz,   | 800Hz,  | 1KHz,  | 1.25KHz |
| 1.6KHz, | 2KHz,  | 2.5KHz,  | 3.15KHz, | 4KHz,   | 5KHz,  | 6.3KHz, |
| 8KHz,   | 10KHz, | 12.5KHz, | 16KHz,   | 20KHz   |        |         |

## P.C. Software



## FEATURES

- Superb high – contrast Backlight TFT – LCD color display.
- Compliant with IEC 61672-1 class 2 standard
- Real-time 1/1-Octave and 1/3-Octave analysis.
- Measurement can be started by internal or external trigger.
- Comparator output to trigger external devices.
- Data transfer using USB.
- Dynamic range of 90dB.
- Real time clock with calendar.
- AC and DC outputs.



## SPECIFICATIONS

|  |  |
|--|--|
| Applicable standards                   | IEC61672-1 : 2002 Class 2, ANSI S1.4 : 1983 Type 2.<br>ANSI S1.11 – 2004 Class 2, IEC61260 : 1995 Class 2,<br>ANSI S1.43 – 1997 Class 2  |
| Microphone                             | 1/2-inch Electret condenser microphone   |
| Measurement range                      | 30dB to 130dB  |
| Measurement function                   | Lp , Leq , LE , Lmax , Lmin  |
| Frequency range                        | 12.5Hz to 20KHz  |
| Frequency weighting                    | A ,C and Z   |
| Time weighting                         | Fast , Slow  |
| Display                                | 3.5" 320x240 TFT – LCD display with back light   |
| Sound level meter range                | 5 ranges in 10 – dB step, 40 – 130dB / 30 – 120dB / 20 – 110dB /<br>10 – 100dB / 0 – 90dB  |
| 1/1-1/3 Analyzer level range           | 5 ranges in 10 – dB step, 40 – 130dB / 30 – 120dB / 20 – 110dB /<br>10 – 100dB / 0 – 90dB  |
| 1/1 Octave and 1/3 Octave band filters | 1/1 Octave band center frequencies : (11 bands)<br>16Hz, 31.5Hz, 63Hz, 125Hz, 250Hz, 500Hz, 1KHz, 2KHz, 4KHz, 8KHz and 16KHz<br>1/3 Octave band center frequencies : (33 bands)<br>12.5Hz, 16Hz, 20Hz, 25Hz, 31.5Hz, 40Hz, 50Hz,<br>63Hz, 80Hz, 100Hz, 125Hz, 160Hz, 200Hz, 250Hz,<br>315Hz, 400Hz, 500Hz, 630Hz, 800Hz, 1KHz, 1.25KHz<br>1.6KHz, 2KHz, 2.5KHz, 3.15KHz, 4KHz, 5KHz, 6.3KHz,<br>8KHz, 10KHz, 12.5KHz, 16KHz, 20KHz |
| Extension cable                        | Available in lengths of 5m (TL-F47/5M) and 10m(TL-F47/10M)   |
| Memory capacity                        | 10000 data (Sound level meter mode)  |
| Signal output                          | AC output : 1 Vrms (at full scale)<br>DC output : 3.0V, 25mV/dB at range full scale  |
| Power                                  | 4 pcs of C size 1.5V (LR14) batteries  |
| External DC power supply               | 6V, 1A   |
| Battery life                           | Approx. 2hrs   |
| Operating Temperature/Humidity         | -10°c to 50°c, 10 to 90% RH  |
| Dimensions & Weight                    | 34.5(H)×10(W)×6(D) cm & Approx. 950g (including batteries)   |
| Accessories                            | Instruction manual, Battery, Carry case, Software, USB cable, Wind shield,<br>3.5ø plug, AC/DC Adaptor.  |



## TES ELECTRICAL ELECTRONIC CORP.

7F, No.31 Lane 513, Rui Guang Rd., Neihu Dist, Taipei, Taiwan

Tel : (02) 2799-3660 Fax : 886-2-2799-5099

E-mail : tes@ms9.hinet.net

<http://www.tes.com.tw>

# TES-1358C Sound Analyzer

Full Page Note Book P. C. Screen

