

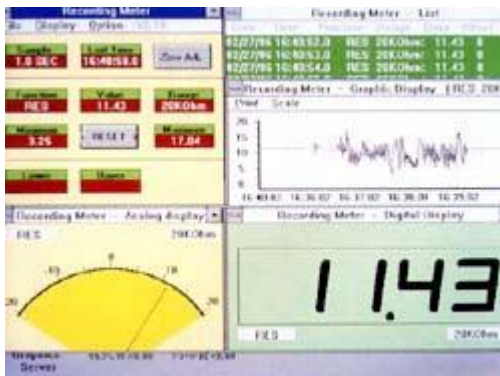
TES-2732 Datalogger Multimeter (RS-232)

FEATURES

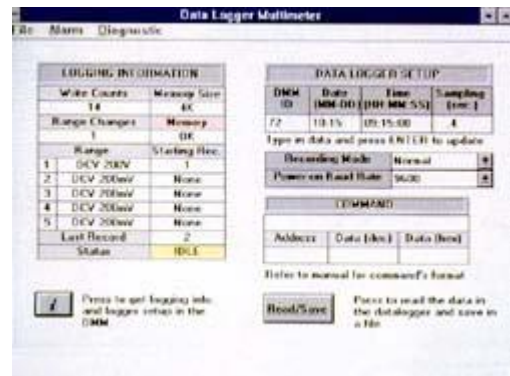
DMM talks with P.C. via RS-232 interface
 Data Logger function
 Direct input of V, A, Ohm, Hz, Cx & o C/ o F
 without any further signal modification



SPECIFICATION



PC view-1



PC view-2

Voltage (AC/DC)

| | |
|----------------------------|--|
| Range | 200m/2/20/200/750(AC)/1000V(DC) Accuracy: DC - (0.5% rdg + 1 dgt) AC - (1.0% rdg + 5 dgts) |
| Resolution | 0.1m |
| Input Impedance | 10MΩ |
| Overload Protection | 600Vrms |

Resistance (Ω)

| | |
|---------------------------------------|------------------------|
| Range | 200/2K/20K/200K/2M/20M |
| Accuracy | 0.8% rdg + 2 dgts |
| Resolution | 0.1 Ω |
| Overload Protection | 600Vrms |
| Max. Open Circuit Voltage | 3.2V |
| Max. Allowable Applied Voltage | 500Vrms |

Diode Test

| | |
|----------------------------------|----------------|
| Resolution | 1mV |
| Accuracy | 2% rdg +2 dgts |
| Max. Test Current | 1.0mA |
| Max. Open Circuit Voltage | 3.2V |

Capacitance (F)

| | |
|--|------------------------|
| Range | 2000p/200n/2 m /20 m F |
| Accuracy | 3% rdg + 10 dgts |
| Test Frequency | 400Hz |
| Data logger function for TES-2732 only | |

Continuity Beeper

| | |
|----------------------------------|-------------------|
| Operation Resistance | Below 30 Ω |
| Max. Open Circuit Voltage | 3.2V |

Frequency (Hz)

| | |
|---------------------------------------|----------------------------|
| Test Range | 10Hz to 20MHz (Auto Range) |
| Range | 2K/20K/200K/2M/20MHz |
| Resolution | 1 Hz |
| Accuracy | 0.5% rdg + 2 dgts |
| Input Sensitivity | 100mV |
| Max. Allowable Applied Voltage | 600Vrms. |

Current (AC/DC)

| | |
|----------------------------|---|
| Range | 200 m /2m/20m/200m/20A (AC/DC) |
| Accuracy | DC - (1.0% rdg + 1dgt) AC - (1.2% rdg + 3dgts) |
| Resolution | 0.1 μ A |
| Burden Voltage | 0.35V |
| Overload Protection | 0.5A/250V Fast Blow Fuse & Diode 20A/380V |

Specifications

| | |
|--------------------------|---|
| Size & Weight | 180mm(L) x 82mm(W) x 38mm(H) & 365g |
| Accessories | Test leads, Spare Fuse, Battery, Operation Instruction, Optional rubber holster. Connecting Cable & Software disc for TES-2730/2732 |

Temperature

| | |
|-------------------|--|
| Range | -50 $^{\circ}$ C to 1370 $^{\circ}$ C -50 $^{\circ}$ F to 1999 $^{\circ}$ F |
| Resolution | 0.1 $^{\circ}$ C & 0.1 $^{\circ}$ F |
| Sensor | "K" type |

Display:

3-1/2 Digital LCD Display

Maximum Reading 1999

Sampling Rate: 2.5 readings per second

Operation/Storage Condition:

0 $^{\circ}$ C to 40 $^{\circ}$ C < 80% R.H.

-10 $^{\circ}$ C to 60 $^{\circ}$ C < 70% R.H.

Power Source: one 9V Battery

