



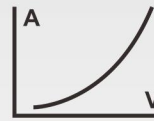
# SPM Series

## DC Power supply & Multimeter



LCD Display

**4<sup>1/2</sup>**  
Digit



Voltage and Current  
change curve

High  
Resolution  
at 10mV/1mA

- DC power supply+multimeter
- Small body for easy carry
- USB communication interface, support SCPI

### Power Supply Specifications:

- 150W/300W output power
- High resolution: 10mV / 1mA
- List waveform editing output, editable 10 groups of timing output function
- Over voltage / over current protection
- Output voltage and current curve monitoring function

### Multimeter Specifications :

- 4 1/2 digits multimeter
- Support Voltage, Current, Capacitance, Resistance, Continuity, and Diode test



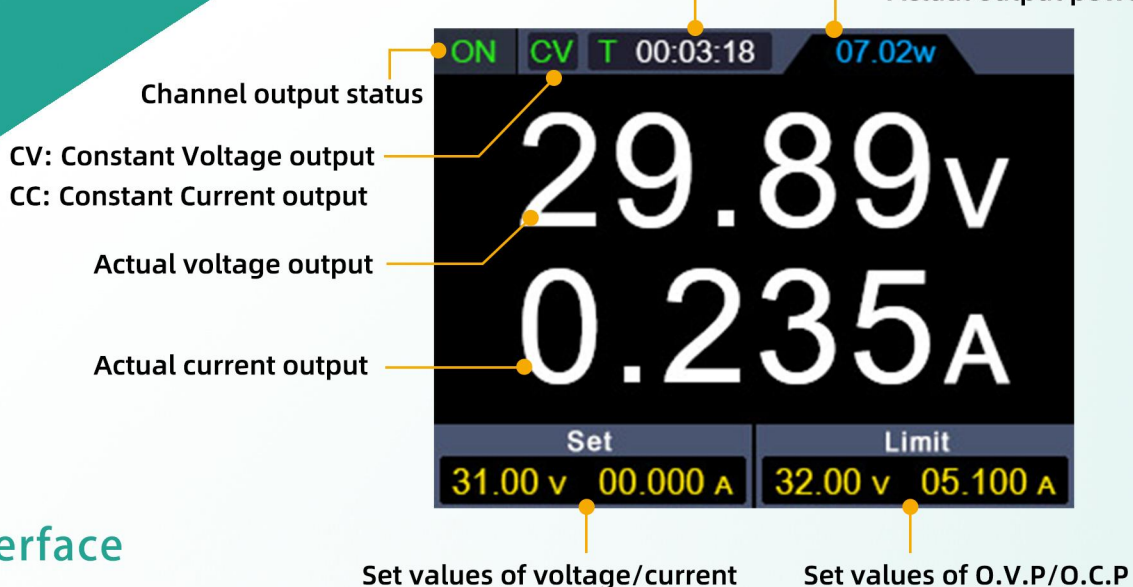
Model	SPM3051	SPM6053	SPM3103	SPM6103
Output Range	30V/5A	60V/5A	30V/10A	60V/10A
Output Power	150W	300W		
Multimeter	4 1/2 digits multimeter. Support Voltage, Current, Capacitance, Resistance, Continuity and Diode test.			

# DC Power supply + Multimeter, make work more convenient

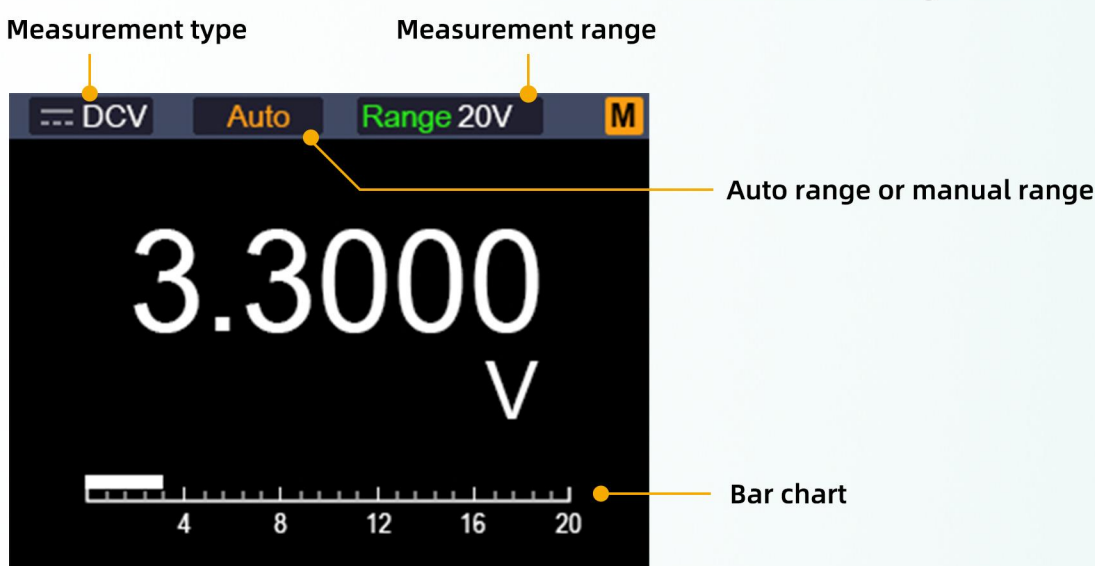


## DC Power supply interface

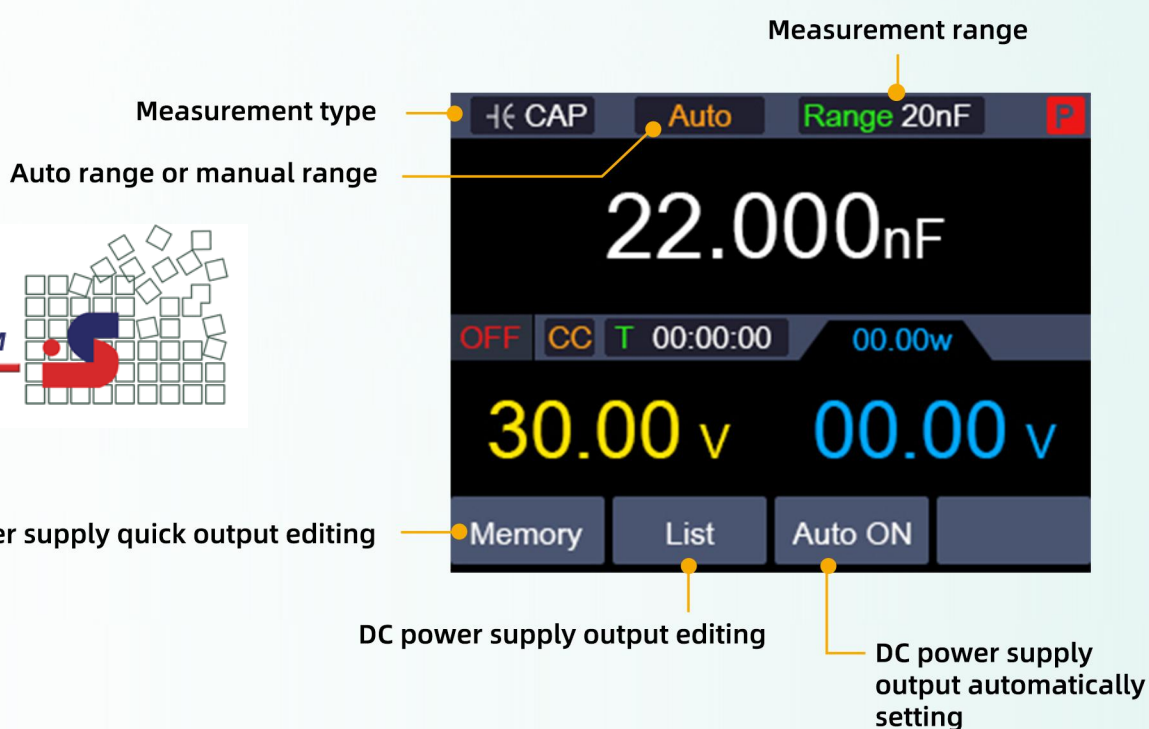
Display cumulative running time Actual output power



## Multimeter interface



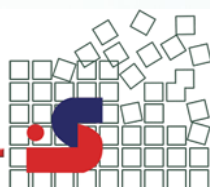
## DC Power supply & Multimeter dual display interface



شرکت سائن

WWW.SAENCO.COM

021 88936611

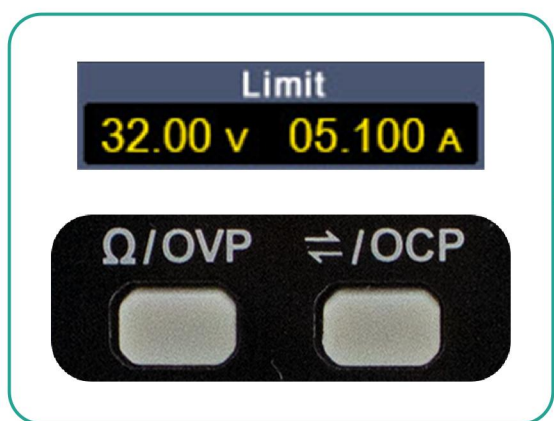


# Multiple settings to protect your circuit



Independent output On/Off button control, protect the circuit.

Long press to set the automatic output voltage/current 5 seconds after booting.

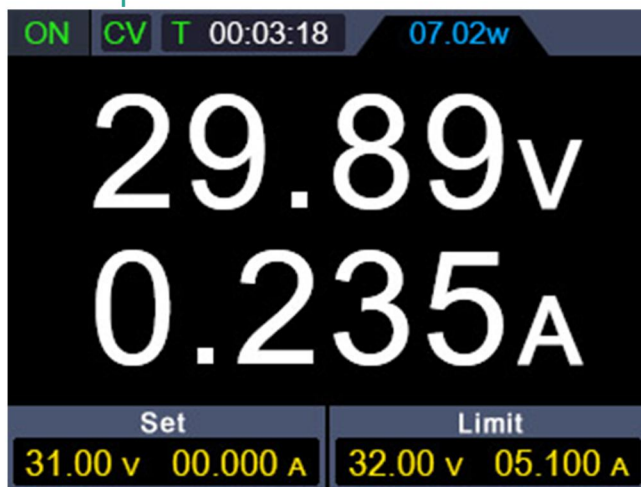


Overvoltage and overcurrent values can be set to protect the circuit

**CV:** Constant Voltage output  
**CC:** Constant Current output

Constant voltage CV/constant current CC intelligent switching mode, effectively protect the circuit.

When the actual current exceeds the preset current value, the power supply automatically switches to CC mode to protect the circuit.



List waveform editing output, editable 10 groups of timing output.

4 groups of Memory shortcut parameters for quick output

	U	I	T	Y/N
6	05.00v	01.600A	00:00:10	<input type="checkbox"/>
7	04.00v	01.400A	00:00:10	<input type="checkbox"/>
8	03.00v	01.200A	00:00:10	<input checked="" type="checkbox"/>
9	03.00v	01.100A	00:00:10	<input type="checkbox"/>

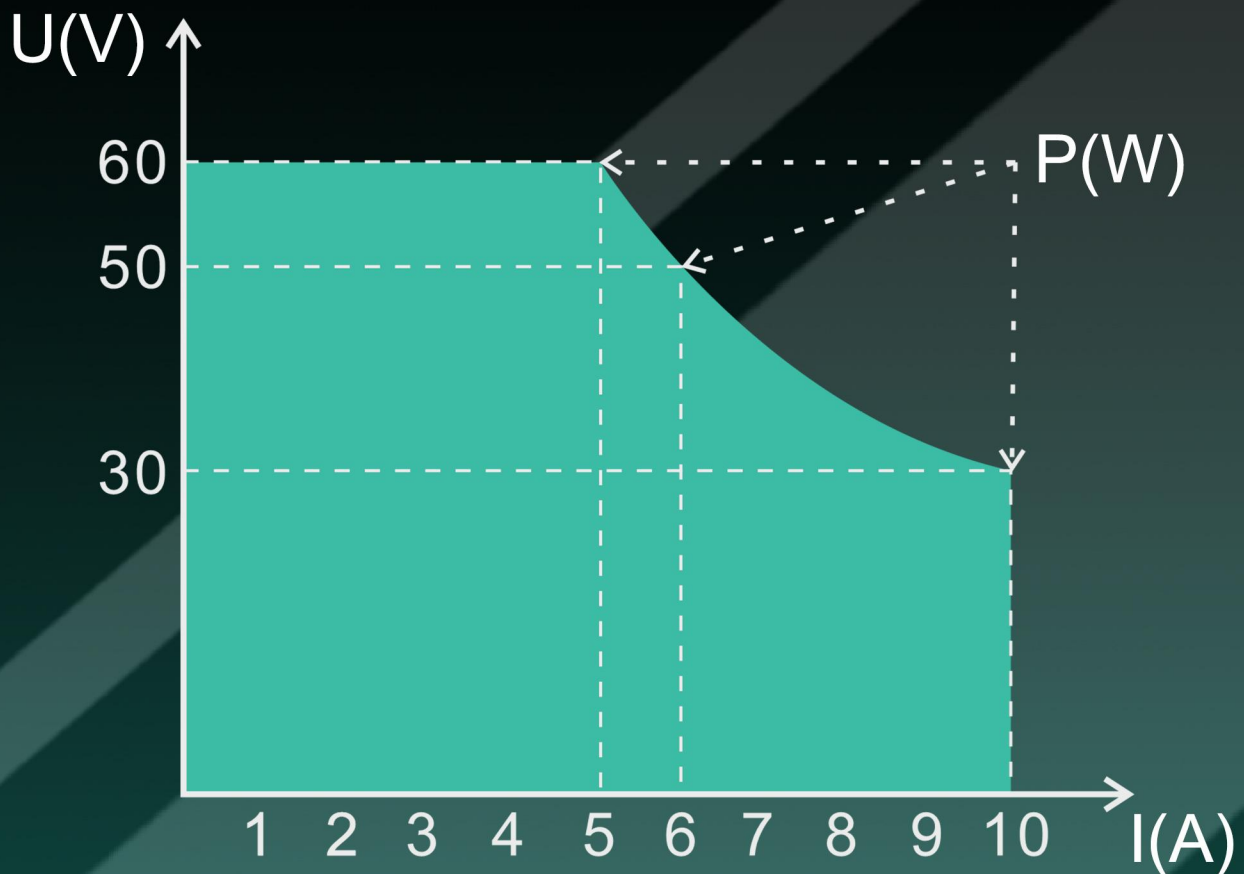
Set: 30.00 v 10.065 A      Limit: 32.00 v 10.200 A

	U	I	OVP	OCP
M1	05.12v	05.000A	32.00v	10.200A
M2	14.97v	04.960A	16.00v	05.100A
M3	07.00v	02.000A	08.00v	02.500A
M4	15.00v	02.000A	32.00v	03.400A

Set: 30.00 v 10.065 A      Limit: 32.00 v 10.200 A

# Small size, Sufficient power

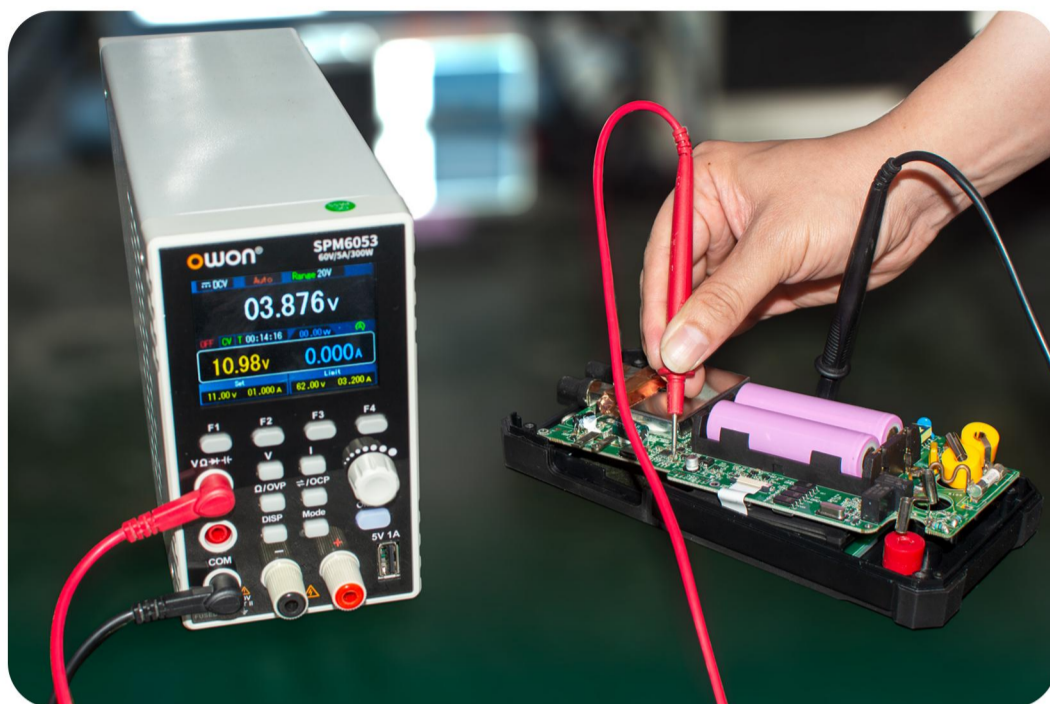
Constant power design, wide application range, provides flexible configuration of higher voltage and current within the rated power range. One device is equal to multiple.



Schematic diagram of power supply constant power  
(take SPM6103 for instance)

# Integrated with high resolution multimeter, convenient and easy to use

The integrated 4(1/2) digits multimeter can test voltage, current, resistance, capacitance, diode and continuity.



## Multiple functions to meet your different testing needs

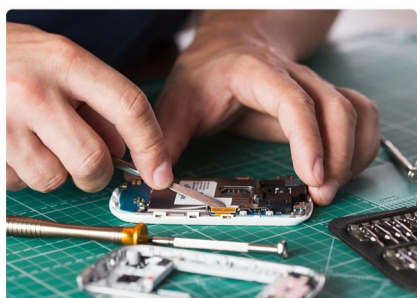
Output voltage/current change curve monitoring function, suitable for repair of phones and laptops, PCB aging test, battery charging and discharging experiment, etc.



Battery charging



Aging test



Phone repair





2.8-inch LCD

Press to switch menus

Multimeter voltage and current measurement sockets, red is positive and black is negative

Channel output terminals

- ① Voltage setting / To switch AC voltage or DC voltage
  - ② Current setting / To switch AC current or DC current
  - ③ Over voltage protection, Over current protection / Switch resistance, capacitance, diode and continuity measurement types
  - ④ Switch different display modes
  - ⑤ Switch between DC power supply or Multimeter modes
- Adjustment knob
- Channel output on/off button, long press to turn on the automatic output function
- Front USB port, output 5V/1A



USB Device communication port, supporting SCPI

Intelligent temperature control fan

Power cord socket

Fuse

Power switch

Voltage	Fuse	Line Rating
200-240V AC	250V, F5A	50-60 Hz 600 Watts 800 VA Max

Model	SPM3051	SPM6053	SPM3103	SPM6103
Channel	Single Channel Output			
Total Output Power	150W	300W		
Channel Output	0 - 30V / 0 - 5A	0 - 60V / 0 - 5A	0 - 30V / 0 - 10A	0 - 60V / 0 - 10A
Display	2.8 inch color LCD display			
Interface	USB Device, USB Host (5V1A)			
Dimension(W x H x D)	82 x 142 x 226 (mm)			
Working Temperature	0 - 40°C			
Weight	Approx. 1.5kg			

## + DC Power Specifications

The instrument must be operated continuously for more than 30 minutes at the specified temperature to ensure the following parameters.

Model	SPM3051	SPM6053	SPM3103	SPM6103	
Rated Output (0°C-40°C)	Voltage	0 - 30V	0 -60V	0 - 30V	0 -60V
	Current	5A	5A	10A	10A
	Output Power	150W	300W	300W	300W
Load Regulation	Voltage	≤30mV			
	Current	≤20mA			
Power Regulation	Voltage	≤30mV			
	Current	≤20mA			
Setting Resolution	Voltage	10mV			
	Current	1mA			
Readback Resolution	Voltage	10mV			
	Current	1mA			
Value Resolution (within 12 months) (25°C±5°C)	Voltage	≤0.1% ± 20mV		≤0.1% ± 30mV	
	Current	≤0.05% ± 10mA			
Readback Value Resolution (25°C±5°C)	Voltage	≤0.1% ± 20mV		≤0.1% ± 30mV	
	Current	≤0.1% ± 10mA			
Ripple/Noise(*)	Voltage(Vp-p)	≤30mVp-p		≤50mVp-p	
	Voltage (rms)	≤3mVrms		≤5mVrms	
	Current (rms)	≤30mA <sub>p-p</sub>			
Output temperature coefficient (0°C-40°C)	Voltage	100ppm/°C			
	Current	200ppm/°C			
Readback temperature coefficient	Voltage	100ppm/°C			
	Current	200ppm/°C			
Response Time(50%-100% rated load)	≤1.0ms				
Storage	4 groups of data				

\* Noise bandwidth 20MHz, ripple bandwidth 1MHz, connect 10uF electrolytic capacitor in parallel with 0.1uF ceramic capacitor to the output terminal for testing.

## + Multimeter Specifications

Full Scale Reading	4½ digits	Auto Range	√
Measure	Voltage, Current, Capacitance, Resistance, Continue, Diode(0-2V) test		
Capacitance	20.000nF,200.00nF,2.0000uF,20.000uF,200.00uF, 2.0000mF: ±(3.0%±10digit)		
Voltage	DCV: 200.00mV: ±(0.3%±10digit), 2.0000V, 20.000V, 200.00V,1000V: ±(0.3%±5digit), ACV: 200.00mV, 2.0000V, 20.000V, 200.00V: ±(0.8%±10digit) 750V: ±(1%±10digit)		
Current	DCA: 200.00mA:±(0.8%±10digit),10.000A: ±(2.5%±10digit) ACA: 200.00mA:±(1%±10digit),10.000A: ±(2.8%±10digit)		
Impedance	200.00Ω,2.0000kΩ,20.000kΩ,200.00kΩ,2.0000MΩ: ±(0.8%±10digit),20.000MΩ: ±(1%±3digit) 100MΩ: ±(5%±10digit)		

Specifications subject to change without prior notice.

## PRODUCT ACCESSORY



- ① Main Device
- ② Quick Guide
- ③ Power Cord
- ④ Multimeter Lead
- ⑤ Ground Wire
- ⑥ Fuse

**Dimension (W×H×D):** 82 x 142 x 226 (mm)  
**Device Weight:** Approx. 1.5kg

